

SAITAMA UNIVERSITY

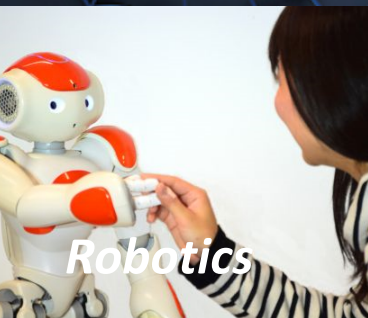
Graduate School of Science & Engineering

International Graduate Program on Renewable Energy System Engineering

Saitama University Campus



Informatics



Robotics

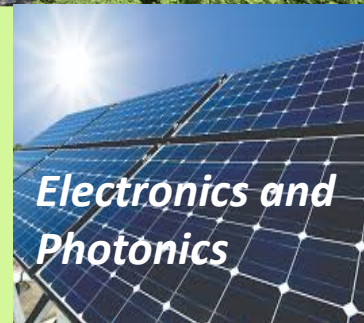
- ENGLISH MEDIUM PROGRAM - PhD COURSES

to approach Renewable Energy System Engineering

- ◆ Electronics & Informatics
- ◆ Materials Science
- ◆ Mechanical Engineering

Scholarships Available

MEXT, JASSO, JICA,
Rotary Yoneyama
and others



*Electronics and
Photonics*



*Mechanical
Science*

Special Admission for Applicants Residing Abroad

Every year, highly qualified students residing abroad are selected as full scholarship students for MEXT University Recommendation.

Application Forms are available from our Website

- Those who are interested in Master's Program, please consult us for more information



RESE Website



CONTACT US:

FSO-RESE Office

Graduate School of Science & Engineering

Saitama University

255 Shimo-Okubo, Sakura-ku, Saitama, Japan 338-8570

Email: rese@gr.saitama-u.ac.jp

Web: <http://park.saitama-u.ac.jp/~rese/>

Study in Japan

